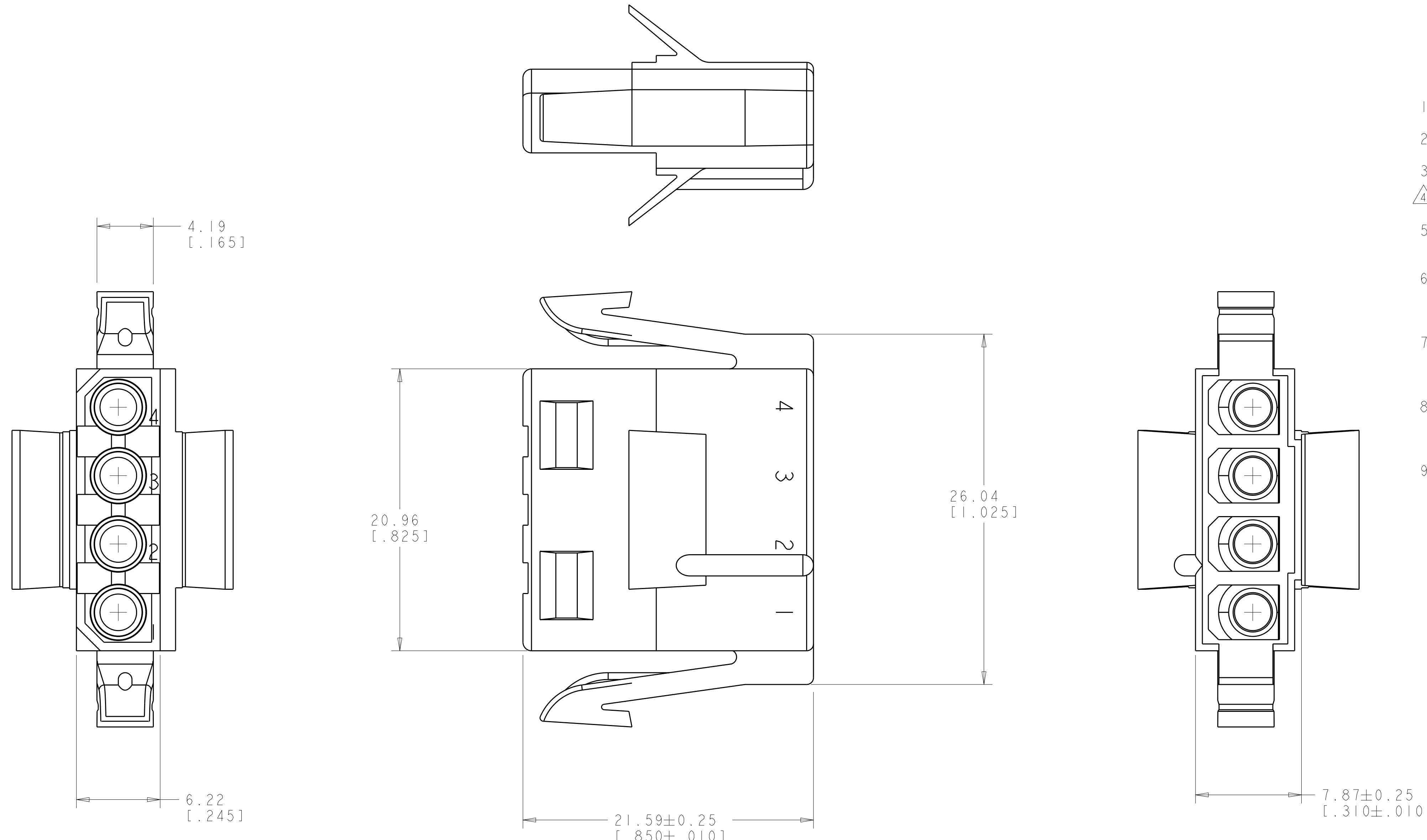
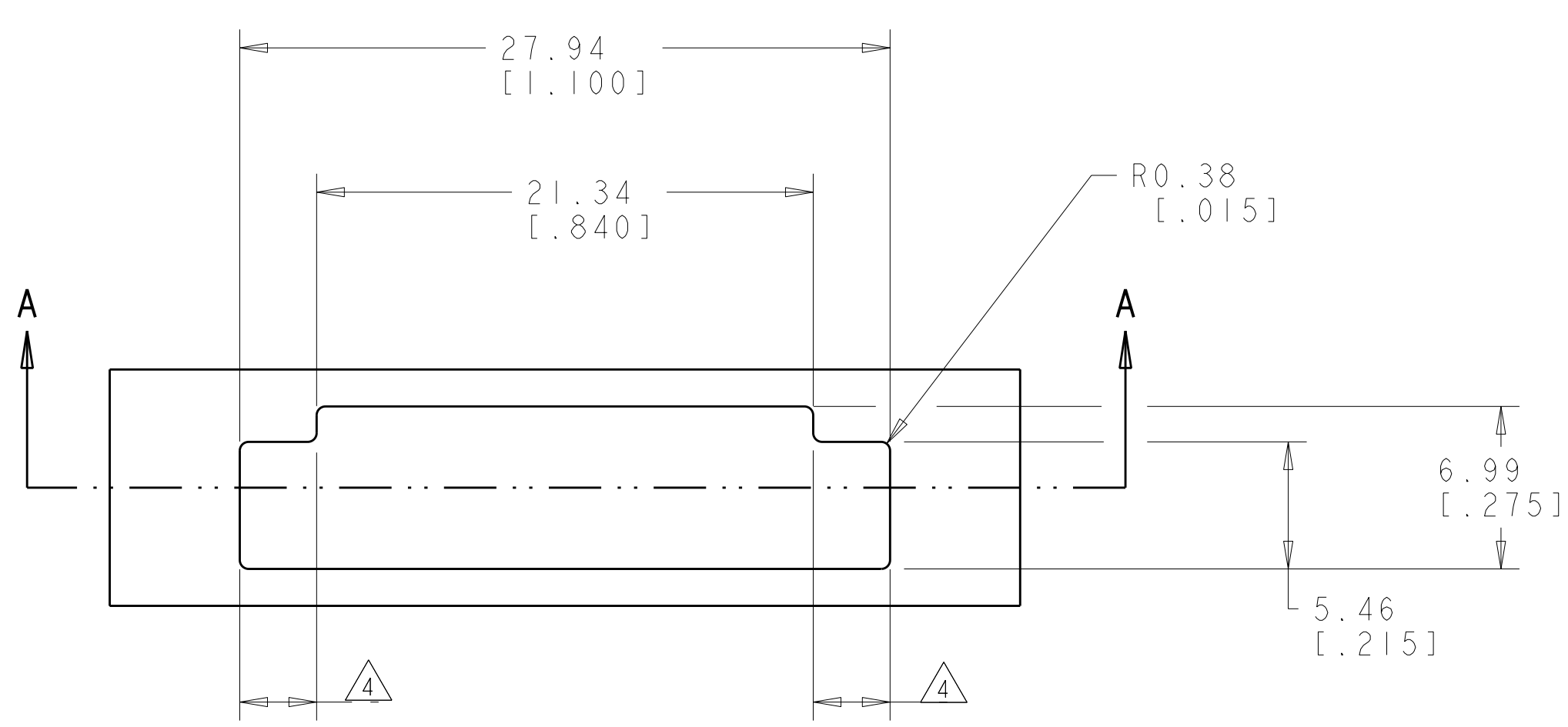


LOC	DIST	REVISIONS			
CM	00	REV	DATE	BY	CHKD
		R1	06APR2011	RK	HMR



1. THIS PLUG TO BE USED WITH CAP 480426.
2. TO BE USED WITH MATE-N-LOK SOCKETS.
3. RECOMMENDED PANEL THICKNESS 0.64 - 1.65 [0.025 - .065].
4. DIMENSIONS TO BE EQUAL WITHIN 0.13 [0.005].
5. THE PANEL MUST BE PUNCHED SO THAT THE HOUSING ENTERS THE PANEL IN THE SAME DIRECTION AS THE PUNCH.
6. BOTH LOCKING LEGS ARE TO BE SQUEEZED TOGETHER AND HOUSING INSERTED "STRAIGHT IN" AS OPPOSED TO A ROCKING MANNER OF INSERTION.
7. PANEL MUST NOT HAVE ANY MATERIAL (PAINT, PORCELAIN, ETC.) APPLIED IN THE MOUNTING HOLE AREA THAT WOULD DECREASE RETENTION OF THE HOUSING IN THE PANEL.
8. IF NOTES 5 AND 7 ARE NOT COMPLIED WITH THE 27.94 [1.100] DIMENSION SHOULD BE REDUCED TO 27.43 [1.080] TO ASSURE PROPER RETENTION IN THE PANEL.
9. DIMENSIONS IN BRACKETS ARE IN INCHES.)



DIRECTION OF HOUSING AND PUNCH ENTRY

SECTION A-A

RECOMMENDED MOUNTING INFORMATION

SCALE 4:1



NATURAL	HI-TEMP NYLON	3-480425-0
NATURAL	NYLON	1-480425-0
COLOR	MATERIAL	PART NUMBER

THIS DRAWING IS A CONTROLLED DOCUMENT.		DWG NO. 05-OCT-2001		CHKD. WHITAKER	
DIMENSIONS: mm [INCHES]		TOLERANCES UNLESS OTHERWISE SPECIFIED:		APVD. D. COLEY	
9 PLC	±	05-OCT-2001	NAME		
1 PLC	±	05-OCT-2001	PRODUCT SPEC		
3 PLC	±0.13 [1.005]	05-OCT-2001	APPLICATION SPEC		
4 PLC	±		WEIGHT		
ANGLES	±		SIZE CAGE CODE DRAWING NO. RESTRICTED TO		
FINISH	40° 30'		A100779C=480425		
MATERIAL SEE TABLE			CUSTOMER DRAWING SCALE 5:1 SHEET 1 OF 1 REV R1		



TE Connectivity

PLUG, 4 CIRCUIT, PANEL MOUNT, MATE-N-LOK™